

Revision Record

Date	Version	Revision
10/21/2025	1.0.4.2	<ol style="list-style-type: none">1. Decode: Added SPMI, Spacewire, USB2.0, CANXL2. Math:<ol style="list-style-type: none">a) Added operators: tan, atan, envelope, delay, FFT phaseb) FFT: added windows Blackman-Harris and Gaussianc) Formular editor: supported measure item as the component of a formulad) Supported Trend and Track as math trace3. Measure :<ol style="list-style-type: none">a) Added item: Bit Rate, UpperLowerb) Supported to limit the display digits of measurec) Supported to display up to 24 items at the same time4. Analysis:<ol style="list-style-type: none">a) Added Double Pulse Testb) Added Serial Test5. Probe: Supported SDP6150A, SDP6150D6. Roll: Supported Math and track cursors in Stop mode7. Display: Supported custom colors for XY trace8. Webserver: supported inverted screenshot (according to the Image style setting in the Save menu); added virtual front panel9. Save/recall: Supported full screen mode when preview an image; supported to save multi channels data as a single file; supported Auto Save;10. Utility: Added English help; Supported password for screen saver11. Fixed several bugs:<ol style="list-style-type: none">a) The instrument becomes slower after long time runb) Webserver: some control issue in full-screen modec) Cannot save a Memory trace to filed) OPC command response error
7/16/2024	1.0.3.9	Optimized Self-cal time from 52 minutes to 22 minutes
6/29/2024	1.0.3.7	Made Option 16LA and Option FG Standard
4/11/2024	1.0.3.3	1 st release

Version Compatibility

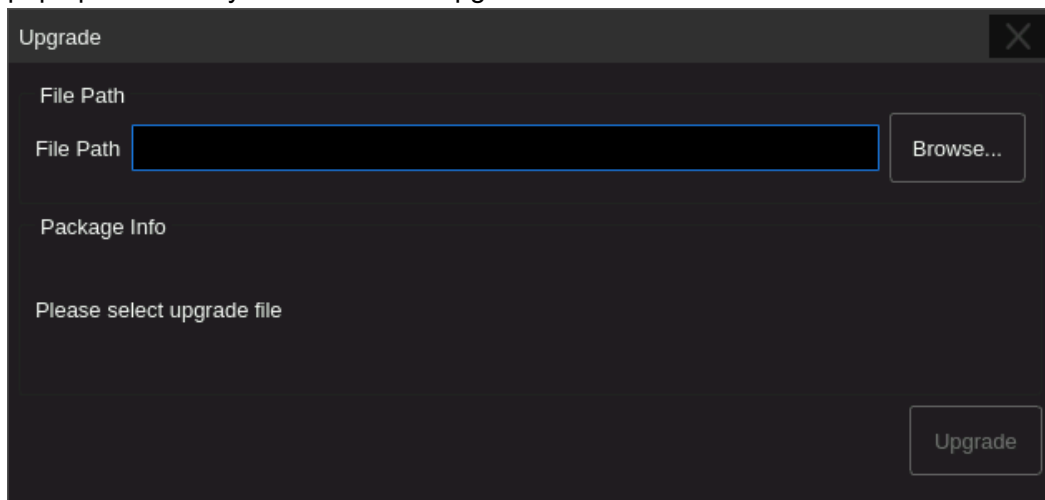
Source Version	Object Version	Compatibility
1.0.2.1	1.0.4.2	Tested
1.0.3.3	1.0.3.7	Tested

Upgrade Instructions

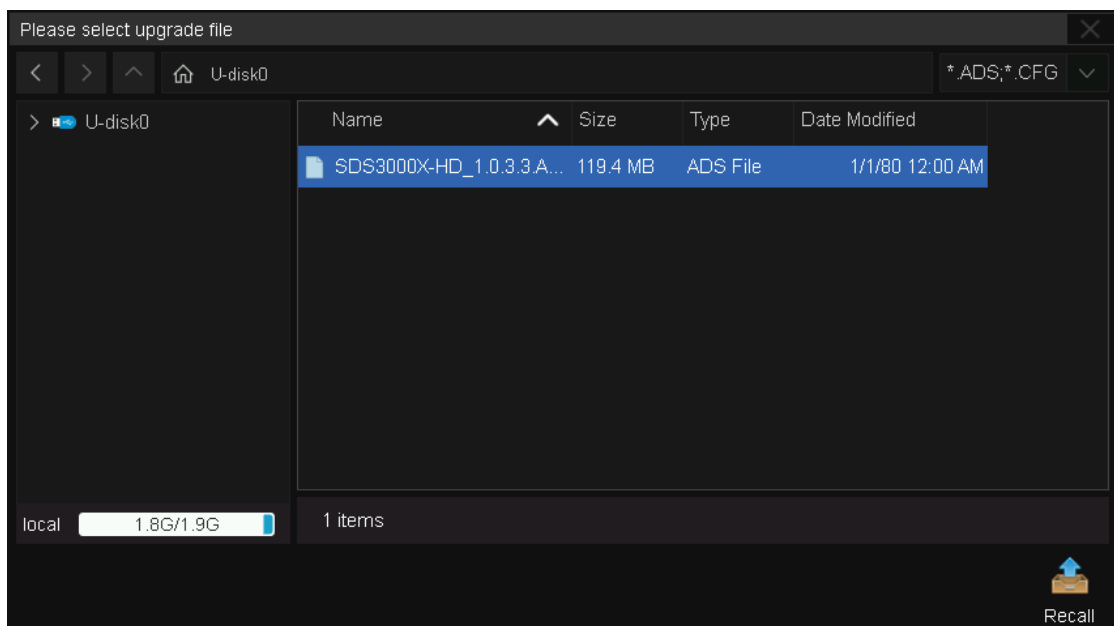
Upgrade from a U-disk (USB Memory device)

WARNING: DO NOT shut off the instrument until the update is completed.

1. Copy the update file (*.ads) to a FLASH type U-disk, and then insert the U-disk into one of the USB host ports of the instrument.
2. Perform " *Utility* -> *Menu* -> *Maintenance* -> *Upgrade*". The following the menu should pop up and allow you to select the upgrade file

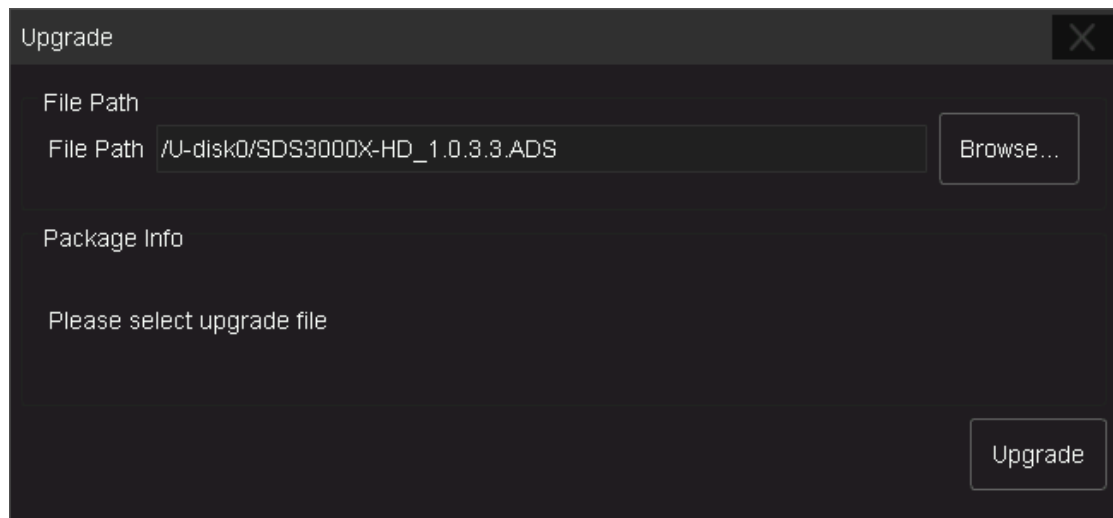


3. Click *Browse* in the menu above, and then select the correct update file (*.ads) in the pop-up resource manager

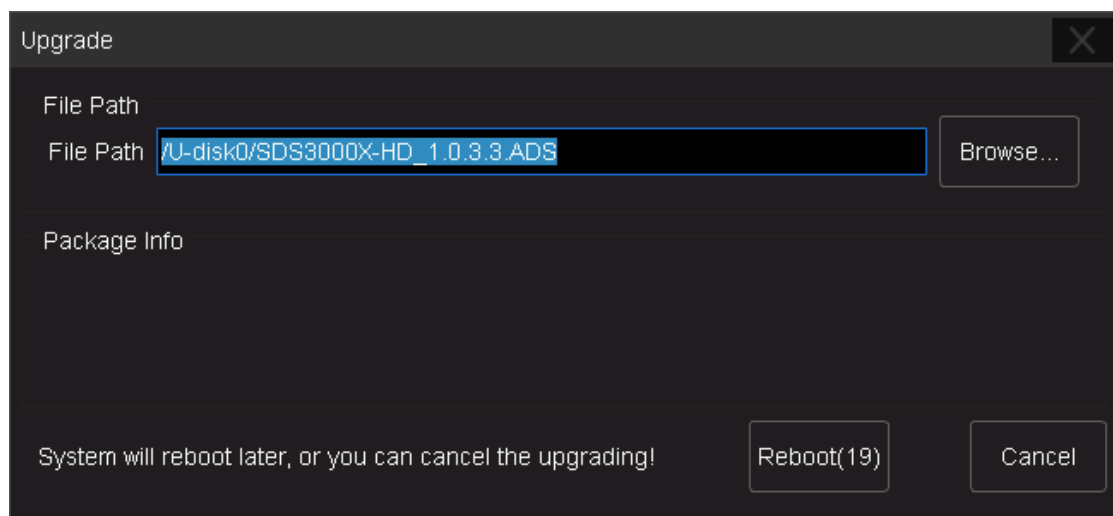


4. Click the recall icon  in the interface above and return to the upgrade dialog.

Click **Upgrade** to perform the upgrade operation:



5. The system will first copy and verify the upgrade package. After the upgrade package is validated, the following interface will appear. Click **Reboot** to continue the upgrade, or click **Cancel** to cancel it.



6. After the instrument reboots, check the version number through the steps **Utility** -> **Menu** -> **System Info** to confirm if the upgrade is successful.



WARNING: DO NOT shut off the instrument until the update is completed.

Upgrade from the Web Server

A built-in web server provides an approach to control the instrument by web browser. This process doesn't require any additional software to be installed on the controlling computer. Set the LAN port correctly (see the User Manual for details), input the IP address of the instrument in the browser address bar, and then the user can browse and control the instrument on the web.



WARNING: DO NOT shut off the instrument until the update is completed.

1. Click the "FirmwareUpdate" button in the web interface



2. Select the correct update file (*.ads) stored on the computer. The instrument will automatically download the update file and perform the upgrade once the file is specified.

WARNING: DO NOT shut off the instrument until the update is completed.